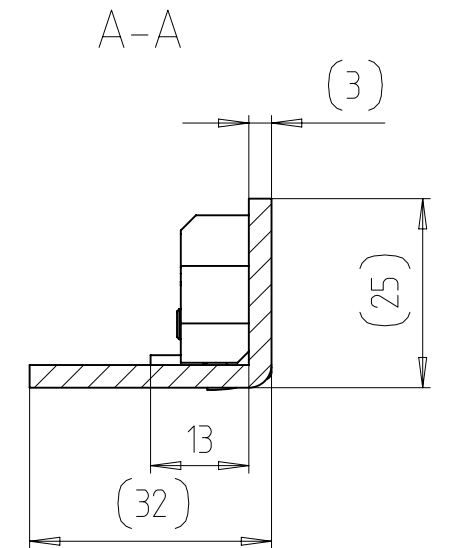
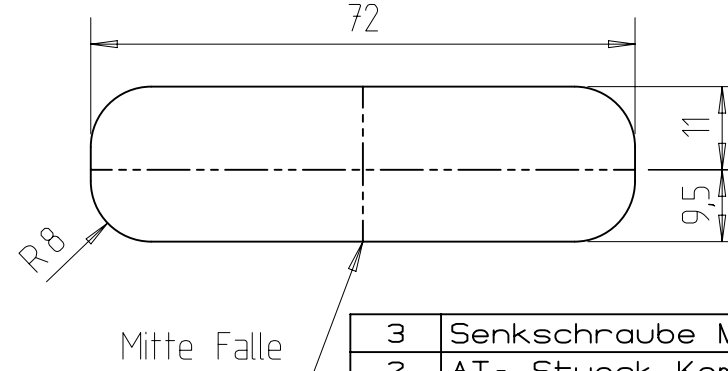
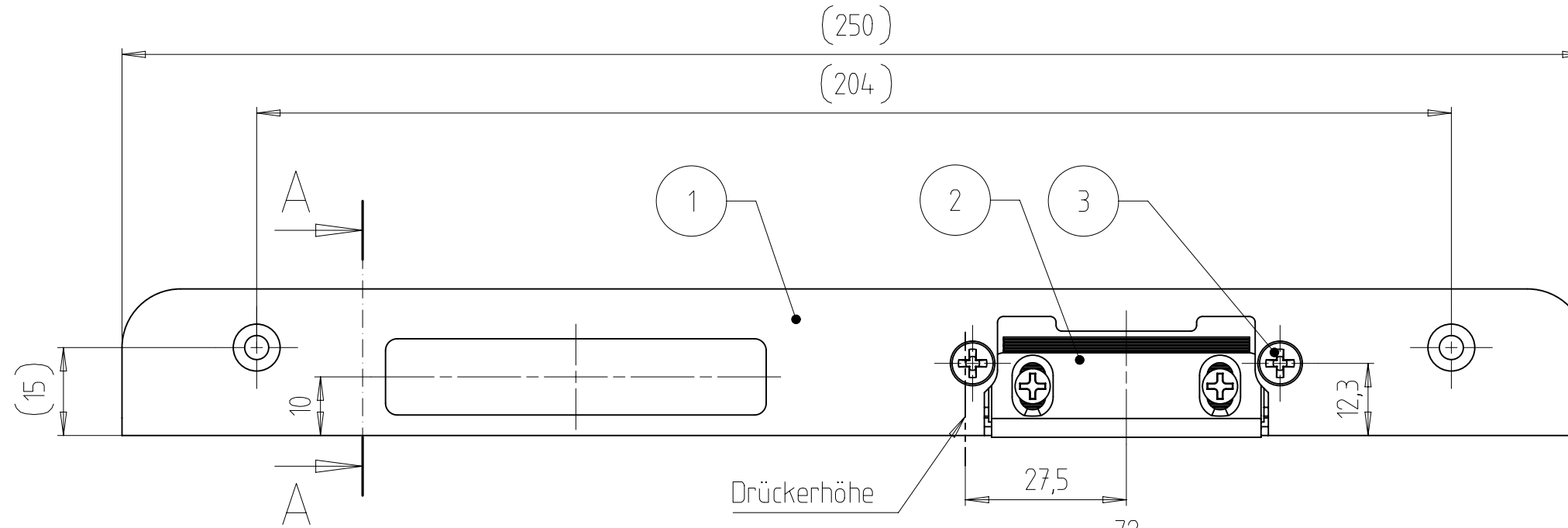
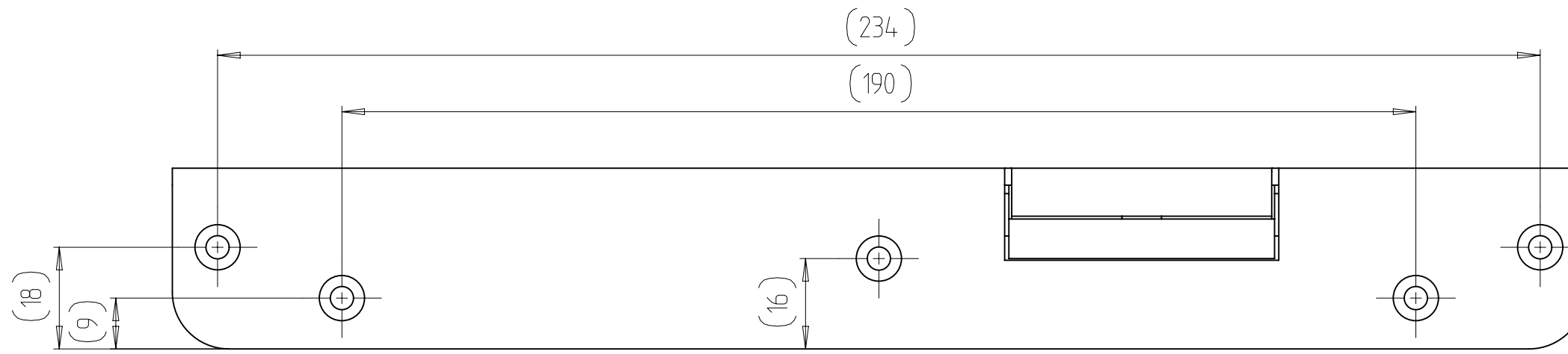


The Drawing and its contents are to be kept secret from third parties, particularly competitors. The drawing and documents which go with it are not to be duplicated either in local or extract, or used in other documentation without express approval (§15 and §18 UrHG - §1 and §18 UWG). A reservation of rights in accordance with §12 PatG is declared for the event that a patent is granted.



Frästiefe = angegebene Tiefe + min. 1 mm

Fräser \varnothing 16 mm
Anlaufring \varnothing 27 mm

wie gezeichnet DIN links
spiegelbildlich DIN rechts

Artikel-Nr. auf der Rückseite geprägt

Tolerierung nach ISO 8015

Pos. 1 und 2 mit Pos. 3 verschraubt

3	Senkschraube M4x6,5-70-H	2	9.741.11171	
2	AT- Stueck Komplett	1	7.803.00006	
1	Winkel-Schliessblech	1	9.851.00003	
Pos	Benennung	Stck	PDM-Nr.	Bemerk
Qty.	Type of Modification	ANT	Drawn	Approved
		EK1-2224301		Date
Volume /mm ³	Weight/g	Material-No.	Item-No.	Tool-No.
39808	332,339		15-3E ABG.	
		Tolerance	Part-Discription	
		ISO 2768 mK	Winkel-Schliessblech	
Scale	Additional Notice			
1 : 1				
Drawn	M. Müller-Bachem	KFV	Document No.	Doc. Part No.
Date	23.03.2015		7.851.14746	000
Appr.	P. Thode		Revision	00
Date	23.03.2015		Status	20
			Replacement for :	Test procedure
			Replaced by :	Size
				A3